

# **LINUX SOFT BD LTD.**

## Company Profile



[www.LINUXSOFTBD.COM](http://www.LINUXSOFTBD.COM)



## Linux Soft BD Ltd.

Plot: 498 Holding: 758 Block#C, Khilgaon, Dhaka-1219, Bangladesh  
Cell: +88-01944 22 88 88, +8801911821085 Fax: +88-02-7215191  
E-mail: info@linuxsoftbd.com, linuxsoftbd@gmail.com

Thank you for your interest in **LINUXSOFT BD LTD.**

The information contained in this packet provides you with a brief introduction to who we are, what we do, and how LINUXSOFT can be of value to your business. To accomplish this, we present an overview of our services, highlight our capabilities, and offer some brief examples of our experience.

**The content is broken down as follows:**

- A. Company Information (At a Glance)**
- B. Corporate Overview**
- C. Company Organ gram**
- D. Experience**
- E. Available Services**
- F. Contact Information**

Because every client's project poses its own set of unique challenges, it is impossible to compose one document that completely addresses everyone's specific needs. What we have attempted to do in the following pages is simply provide a glimpse into some of our capabilities. LINUXSOFT Software is a full custom services firm. As such, it's our business to quickly adapt to meet our clients' diverse needs... and we have a proven track record of doing just that. We are always interested in exploring new projects, so if you're interested in discussing your particular development challenges with us, please contact us at:

info@linuxsoftbd.com. we're confident that our staff of experienced professionals can be a valuable addition to your team.

**Sincerely**

Reaz Uddin Ahmmmed

## A. Company Information (At a Glance)

Name of Company	: Linux Soft BD Ltd.
Chairman	: Sk. Nasir Uddin Ahmmed
Founder Managing Director	: Reaz Uddin Ahmmed.
Business Type	: Software Development, ITES & ICT, Export -Import, Manufacture and Information Technology.
Registered Address	: 152 North Goran, Dhaka-1219
Office Address	: Plot: 498 Holding: 758 Block#C, Khilgaon, Dhaka-1219
Address of Website	: www.linuxsoftbd.com
Contact Number	: Tel -: +88-02-7215191, Mobile-:+88 01975527672, +8801944228888
E-mail Number	: info@linuxsoftbd.com , linuxsoftbd@gmail.com
Warehouses Space	: 2000 Sft.
Monthly Distribution	: As per demand
Team Member	: 20
Sister Concern	: Unique IT World. Beatific Brand Management, Kakehashi Nihongo Gakko

## B. Corporate Overview

**Who We Are...**LINUXSOFT BD LTD. is a custom software services firm based in Bangladesh. We have extensive experience in many diverse areas of software development. Our experienced staff of professionals has worked with a wide array of platforms, languages, and tools in the course of our various projects.

**What We do...**Quite simply: we write code. However, unlike most software companies, we realize that's only part of the job. We don't just write code... We develop professional software. This is why our clients choose LINUXSOFT. Many companies can find programmers to generate code. However, few have the experience to produce professional quality software.

Our ability to develop code is only the beginning of our capabilities. Being a “custom” firm, LINUXSOFT is able to provide our clients with a variety of services. **A few of the services available from LINUX SOFT BD LTD. include:**

- System Architecture and Design
- Software Development
- Project Management
- IT Support and Network Administration
- Complete Turnkey Systems
- Testing and Quality Assurance
- Feasibility Studies
- Technical Documentation and Training Services
- Placement and Recruiting Services
- Import Computer, Laptop & Accessories
- Import Mobile & Mobile Accessories
- Import IT related products

LINUXSOFT's services are available on both a fixed and variable cost basis.



## Linux Soft BD Ltd.

Plot: 498 Holding: 758 Block#C, Khilgaon, Dhaka-1219, Bangladesh  
Cell: +88-01944 22 88 88, +8801911821085 Fax: +88-02-7215191  
E-mail: info@linuxsoftbd.com, linuxsoftbd@gmail.com

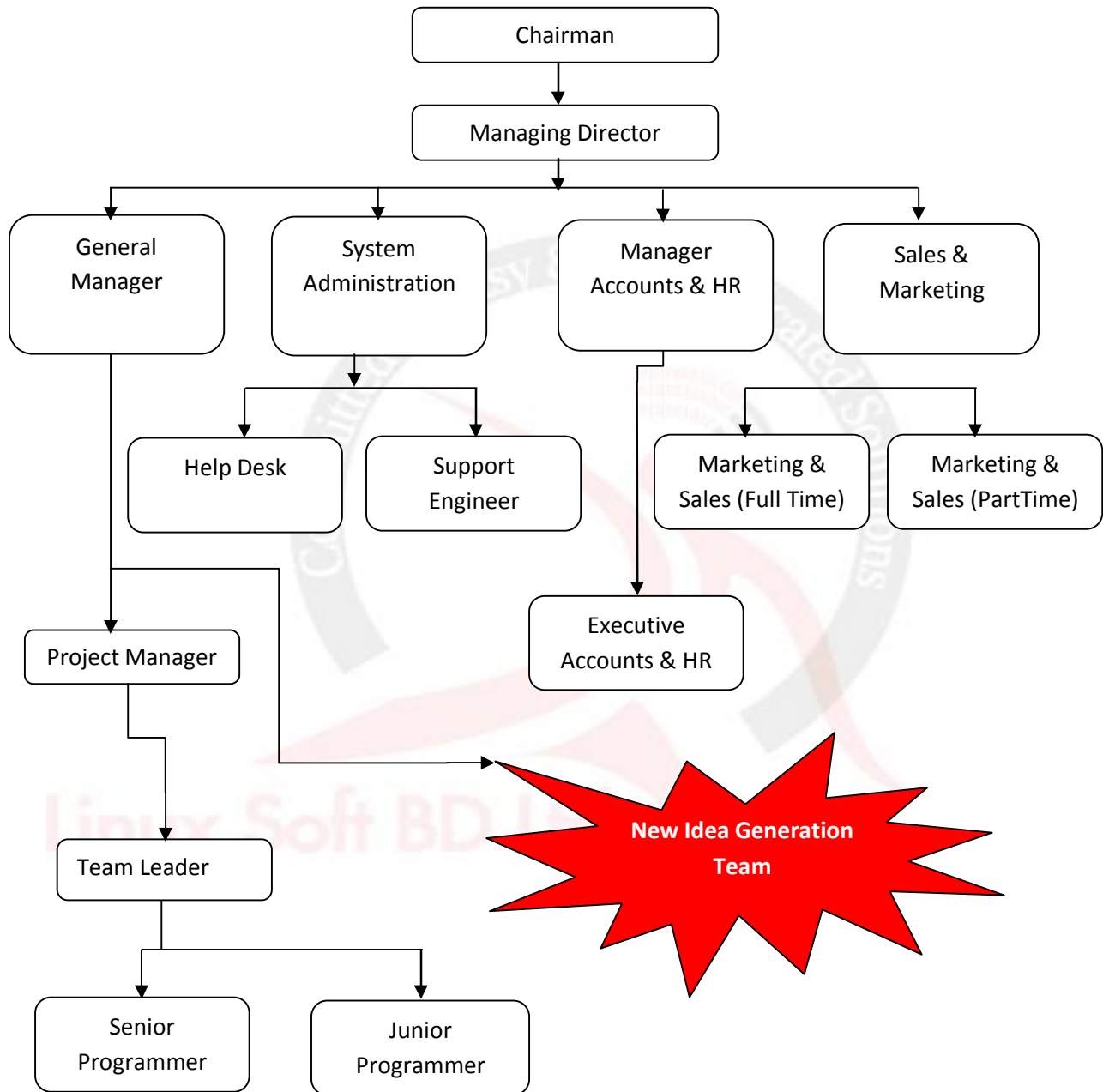
**Partnerships...**Our goal at LINUXSOFT is to become our client's first choice for software services. To accomplish this, we strive to exceed our client's expectations. LINUXSOFT clients cannot simply be satisfied with the job we do... they must be impressed. In this manner, LINUXSOFT strives to build lasting partnerships and ensure client satisfaction. It is upon this foundation that our clients are confident in returning for future development needs.

**Experience...**Providing quality software services begins with experience and ends with dedication. LINUXSOFT's professionals have years of experience in design, development, and testing of countless software projects. It is this experience, along with our dedication to giving clients the best quality service possible, which sets LINUXSOFT apart from other firms.

**A Proven Track Record...** LINUXSOFT has a proven track record of providing high quality, custom software and project management services. Our experience is broad and spans the complete software development cycle.

Linux Soft BD Ltd.

## C. Linux Soft BD Ltd. Company Organogram



## D. Experience

**Dynamic...**As a custom software development firm, LINUXSOFT has amassed an impressive resume of projects. It's the custom nature of our development projects that has enabled LINUXSOFT to acquire vast experience in many diverse areas of software development. Our experience, in conjunction with our quality personnel, enables LINUXSOFT to be dynamic enough to tackle almost any software development project.

LINUXSOFT has a proud history of utilizing experience to provide our clients with the best services possible. This difficult task is accomplished by applying experienced personnel to every project. LINUXSOFT was founded on the principle of gathering an elite group of software engineers and professionals, and leveraging their collective abilities. Naturally, each of these "producers" brings their own particular specialization and experience to the table. Once they join the LINUXSOFT team, we cross-train our consultants to diversify and increase their overall skills. The result for our clients is a group of individuals that can genuinely contribute and have a positive impact on development projects.

- System Analysis, Design, Development and Testing
- Mobile, Desktop and Web Applications
- Static and Dynamic Website Development (Internet/Intranet)
- Semiconductor EDA Applications
- ERP, Point-of-Sale and General Business Services Applications
- System Architecture and Implementation
- Client/Server Applications and Distributed Systems
- Systems Integration
- Platform Migrations and Code Porting
- Object-Oriented Design and Analysis
- Project Management Consulting
- Technical Documentation and Training

No matter what your development challenge, LINUXSOFT consultants are a valuable resource.



**Languages, Platforms, and Tools...** Another advantage of providing custom services is that LINUXSOFT consultants have gained extensive experience with a wide variety of languages, platforms, and tools during the course of our projects. In addition, LINUXSOFT consultants have become experts at adjusting quickly when faced with new development environments. We are able to rapidly “come up to speed” on existing projects. The following lists just a few of the languages, platforms, and tools with which we have experience:

General Languages: C#, C, C++, PHP, Assembly, Lisp, Skill, Pascal, FORTRAN, COBOL, Tcl/Tk, Tix

Languages: Perl, Python, Swig, shell scripting, and more

Technologies: .NET, XML, HTML, CGI, Java, JSP, J2EE, J2ME, ASP, VBS, Web Servers, Mail Servers, Firewalls, IIS, Apache, Qmail, Tomcat, MySQL, MSSQL, Oracle, HTML, CSS, JQuery, JavaScript, Angular JS, Node JS and more

Frameworks: .Net, MVC, Entity Framework, ADO.Net, YII, Laravel, Codeigniter, and more

Platforms: Windows (XP back to 2.x), Unix (Linux, HP-UX, Solaris, SunOS, AIX), Handhelds (Windows CE, PalmOS), DOS, OS/2, VMS, MacOS

Database Engines & APIs: MSSQL, MySQL, SQLite, ODBC, JDBC, SQL, Access, Paradox, Delphi, dBase, CodeBase, SWIG, and more

Tools & Methodologies: Microsoft MFC, ATL/COM, DDE, OLE, DLL, VBXs, OCXs, USB, RS-232, and more

Networking: Wireless, VOIP, Telephony, LANs/WANs, TCP/IP, Windows Networking, Novell; DNS, NIS, VPNs, VNC, and more



**Windows Experience...**In the Windows applications arena, LINUXSOFT developers writes applications based on from the first release of Windows 2.x. We know the operating system and have extensive experience with the fundamentals of Windows development. LINUXSOFT developers have works on everything from personal nutrition software to GPS satellite tracking systems during the course of our development experience. LINUXSOFT has implemented countless applications, utilized all aspects of the MS Windows environment (such as .Net, MSSQL, ODBC, DDE, OLE, DLLs, drivers and threading), and has gained experience with all the major integrated development environments (IDEs, such as Visual and Borland) In past projects, LINUXSOFT has ported applications, interfaced with external hardware (scanners, data collection devices, etc.), and implemented distributed network solutions.

The first step to developing a Window application is designing the graphical user interface (GUI). An effective GUI is critical to the acceptance and success of any Windows application. Failure to produce an effective GUI will kill even the best application. LINUXSOFT has years of experience in GUI design, both for the Windows operating system and others. LINUXSOFT consultants work very closely with our clients to design the best GUI possible for their specific application.

Integral to the design of the GUI and the remainder of the application is the choice of development tools. Windows application development takes many forms. LINUXSOFT works with its clients to determine the most cost-effective solution given their needs. Depending on the client's requirements, LINUXSOFT will either recommend a high-level framework application structure (such as Visual Basic, Power Builder, or Visual FoxPro), or a lower-level development tool (such as Visual C++). The benefits of higher-level frameworks include decreased development time, rapid prototyping, and lower costs. The trade-offs are lack of flexibility, larger overhead, and limited features. LINUXSOFT has the experience to help our clients make the right choice and strike the proper balance.

**Web Experience...**Although Windows and Web development share many common traits (GUI design, backend database hooks, etc.), there are also many significant differences in the underlying application architectures that one must fully understand to create a successful Web-based application. Over the years LINUXSOFT has gained this type of experience through our projects in both the Windows and Unix environments. LINUXSOFT has Web-enabled existing applications, developed numerous Web-



## Linux Soft BD Ltd.

Plot: 498 Holding: 758 Block#C, Khilgaon, Dhaka-1219, Bangladesh  
Cell: +88-01944 22 88 88, +8801911821085 Fax: +88-02-7215191  
E-mail: info@linuxsoftbd.com, linuxsoftbd@gmail.com

based systems, utilized various backend databases, and setup/administered: Web servers, email servers, FTP sites, and firewalls. The Web development market is a fast-paced environment where technology is always changing. We stay abreast of the latest changes in tools and languages including XML, Java, and others.

**Engineering Design Automation (EDA) Experience...**In the semiconductor EDA field, EDGE has been involved in developing everything from chip-level design browsers down to transistor place and route tools. We have worked with leading semiconductor producers (such as Texas Instruments, Advanced Micro Devices, etc.) and leading industry tool vendors (such as Cadence Design Systems, Mentor Graphics, etc.). Our Integrated Circuit (IC) projects have utilized most of the industry standard tools and languages enabling LINUXSOFT to gain an independent, third-party perspective. Through these projects, we have gained unique experience with numerous tools, APIs, languages, and methodologies implemented throughout the EDA market. LINUXSOFT has been called upon by chip producers to help increase design flow efficiency and even leading EDA tool vendors themselves have called upon LINUXSOFT's experience to help them with their product development efforts.

The fast-paced world of EDA software development poses a unique set of challenges. Semiconductor CAD departments must constantly walk the line between utilizing the industry standard "off-the-shelf" tools and their own internally developed systems. The struggle to integrate the more generalized industry tools with their own customized tools and design flows is a never-ending effort. LINUXSOFT's diverse experience enables us to be of unique value to our EDA clients.

LINUXSOFT is one of the few independent software development firms with the highly specialized experience needed to support EDA software development. EDA development requires the developer to have a unique combination of a strong engineering foundation as well as solid software development skills. To get this combination, companies traditionally either train their engineering staff internally, or hire independent contractors on an as-needed basis. Training staff internally requires time that is often not available due to the fast-paced changes in semiconductor design cycles. Hiring independent contractors is often a gamble. Companies don't know if they've hired a quality developer until they're already committed. In addition, because these individuals are usually hired for short periods then released, there is no continuity with the project and/or the internal design team.

LINUXSOFT solves these problems...LINUXSOFT provides its clients with immediate, proven development resources. By forming long-term relationships with our clients, we maintain continuity with their development efforts. Our staff becomes familiar with their particular development environments, needs, and methods. This enables LINUXSOFT to respond rapidly, as our client's needs change.

LINUXSOFT has experience throughout the complete IC design flow. The following are a few of processes, technologies, tools, and languages with which we have experience:

**Processes:**

- Library Characterization
- Simulation and Modeling
- Floor-planning & Timing Budgeting
- Logic Verification
- Synthesis
- Automatic Place and Route (APR)
- Layout Parasitic Extraction
- In-place Optimization and Back-annotation
- Static/Dynamic Timing Analysis
- Physical Verification

**Technologies:**

- System-on-Chip (SoC)
- Application Specific Integrated Circuits (ASICs)
- Digital Signal Processors (DSPs)
- Very Large Scale Integration (VLSI)
- Very Deep SubMicron (VDSM)

- Cadence TestBuilder Verification Reuse Methodology (VRM) and Transaction Verification Modules (TVMs)

**Tools:**

- Cadence Tools (NC-SIM, Silicon Ensemble, etc.)
- Mentor Tools (DA, DC, Calibre, etc.)
- Synopsys Tools (PT/DC/LC shells, Arcadia, etc.)
- Other Vendors: SiliconMetrics (CellRater), Silicon Valley Research (DCP), Ultima (UDC), Avant! (PL, AP, etc.), and others.

**Languages:**

- RTL, SPICE, VHDL, Verilog, Verilog PLI (Programmable Language Interface), ALF (Advanced Library Format), Synopsys Library Format, IBIS (I/O Buffer Information Specification), Mentor's Ample Language, Cadence's Pillar Database, and others.
- C#, C++, C, ASP.Net, PHP, Assembly, Lisp, Skill, Pascal, FORTRAN, COBOL, Tcl/Tk, Tix, Perl, Python, Swig, shell scripting, XML, HTML, CSS, JQuery, JavaScript, ADO.Net, CGI, Java, JSP, and others.

**Platforms:**

- Unix (Solaris, SunOS, HP-UX, Linux, AIX), Windows (XP back to 2.x), DOS, OS/2, VMS, MacOS

As a custom software development firm, LINUXSOFT has amassed an impressive resume of EDA projects. It's the custom nature of our development projects that has enabled LINUXSOFT to acquire vast experience in many diverse areas of the design flow. Our experience, in conjunction with our high quality personnel, enables LINUXSOFT to be dynamic enough to tackle almost any EDA project. No matter what your development challenge, LINUXSOFT consultants can be a valuable resource



## E. Available Services

LINUXSOFT provides its clients with a wide range of services spanning the entire development process. Clients can utilize LINUXSOFT for the entire development cycle or only for selected portions that require additional support and consultation. Our services are available on an hourly or project basis (see Rates and Billing).

At LINUXSOFT, we draw upon our vast experience to provide our customers with the best possible services. As a custom software development firm, there are no limits on what projects we can undertake. However, most software development efforts require the same basic types of services. Some of the common services available from LINUXSOFT include:

**System Architecture and Design...**Design is often the most critical phase of any software development effort. In many cases, the quality of the finished software is directly proportional to the quality of the initial design. One metaphor is particularly appropriate... Ask yourself this question: What quality of house would you get if you built it with no blueprints? Custom software development is an investment. As with any substantial investment, planning is crucial. However, there is a trade-off. It is possible to over-design. This leads to lost time and money.

LINUXSOFT has the experience to strike the proper balance.

**Development...**The key to quality development is sharp people with a well thought-out plan. Good organization allows developers to modularize the development process. This results in rapid implementation of a system that can be easily tested and expanded for future versions. LINUXSOFT provides a highly qualified technical staff with years of software development experience.

**Project Management...**LINUXSOFT clients often requires additional consulting and managerial support to supplement their in-house development efforts. LINUXSOFT is uniquely qualified to provide this vital support. The professionals at EDGE have worked on countless software development efforts, and as a result are well equipped to quickly anticipate and address problem areas on a given project. LINUXSOFT can serve as troubleshooters or, if need be, assume management of an entire project.



## Linux Soft BD Ltd.

Plot: 498 Holding: 758 Block#C, Khilgaon, Dhaka-1219, Bangladesh  
Cell: +88-01944 22 88 88, +8801911821085 Fax: +88-02-7215191  
E-mail: info@linuxsoftbd.com, linuxsoftbd@gmail.com

**IT Support and Network Administration...** LINUXSOFT has IT network professionals familiar with all types of heterogeneous networks. Clients have utilized our services to design, install, and manage their network systems. Some clients have even outsourced the IT support for their entire office to LINUXSOFT.

**Complete Turnkey Systems...** Complete, integrated systems are no problem for LINUXSOFT. Integrating hardware and software to form a new automated system is a classic utilization of LINUXSOFT's resources. LINUXSOFT has negotiated discount hardware reseller agreements with Network Appliance, Auspex Systems, Tatung, and Wallingford Computer Services to help provide our clients with a low-cost source for their hardware needs. No matter what your hardware needs are, from massive file servers down to desktop PCs, LINUXSOFT can get it for you... and often for less than buying it direct!

**Testing and Quality Assurance...** With our experience in the software development field, LINUXSOFT can provide an extremely valuable third-party perspective, when brought in to test/QA another vendor's software. System testing is fundamental to the quality of any software. Although many developers take short cuts and settle for only testing their software during development (Alpha-Testing), we at LINUXSOFT always encourage our clients to include a distinct testing phase to any software project. This testing phase allows the system to be tested as a completed unit, and is usually done by someone other than the developer. In this manner, additional user feedback on the functionality and usability of the software can be integrated prior to initial release. Completion of the testing phase is accomplished through preliminary use by actual end users of the software in the real world conditions of the client's site (Beta-Testing).

**Feasibility Studies...** Prior to committing substantial resources to a given project, often clients want to obtain more data on the obstacles related to successfully completing the project. LINUXSOFT team members have experience serving in this "recon" type role. They can quickly and efficiently identify the primary and secondary "hot spots", then prepare a Feasibility Report for the client. This report contains a ranked list of all the technical, logistical, and managerial problems associated with the proposed project. In addition, it provides preliminary estimates for cost and time.

**Technical Documentation and Training Services...** LINUXSOFT consultants have developed numerous user manuals, reference guides, and introductory training materials to accompany our custom software



over the years. This experience has provided us with the ability to quickly generate production quality documents. Rather than hiring technical writers (who are often unfamiliar with the underlying technology) to extract information from developers, many of our clients simply have LINUXSOFT develop the supporting materials. LINUXSOFT consultants have become so good at this in fact, that many clients have engaged LINUXSOFT for the sole purpose of creating technical documentation and complete training programs.

**Placement and Recruiting Services...** Finding just the right person for a challenging technical staff position can be quite difficult. Standard placement services often provide overwhelming lists of “candidates,” however many of the resumes provided to the client firms are seldom worth reviewing. This is because the placement firms are not technical people and therefore cannot properly filter the resumes for the hiring managers. LINUXSOFT solves this problem for managers by taking a low volume, high quality approach. With our technical background, we can serve as a front-end filter for managers who don't want to spend their time reviewing every resume with “C” listed as a language.



## Linux Soft BD Ltd.

Plot: 498 Holding: 758 Block#C, Khilgaon, Dhaka-1219, Bangladesh  
Cell: +88-01944 22 88 88, +8801911821085 Fax: +88-02-7215191  
E-mail: info@linuxsoftbd.com, linuxsoftbd@gmail.com

### F. Contact Information

Company Name	Linux Soft BD Ltd.
Address	Plot: 498 Holding: 758 Block#C, Khilgaon, Dhaka-1219
Contact Number	+8801944228888, +8801975527672, +8801911821085
Fax	+88-02-7215191
E-mail	info@linuxsoftbd.com , linuxsoftbd@gmail.com
Web	www.linuxsoftbd.com

Linux Soft BD Ltd.